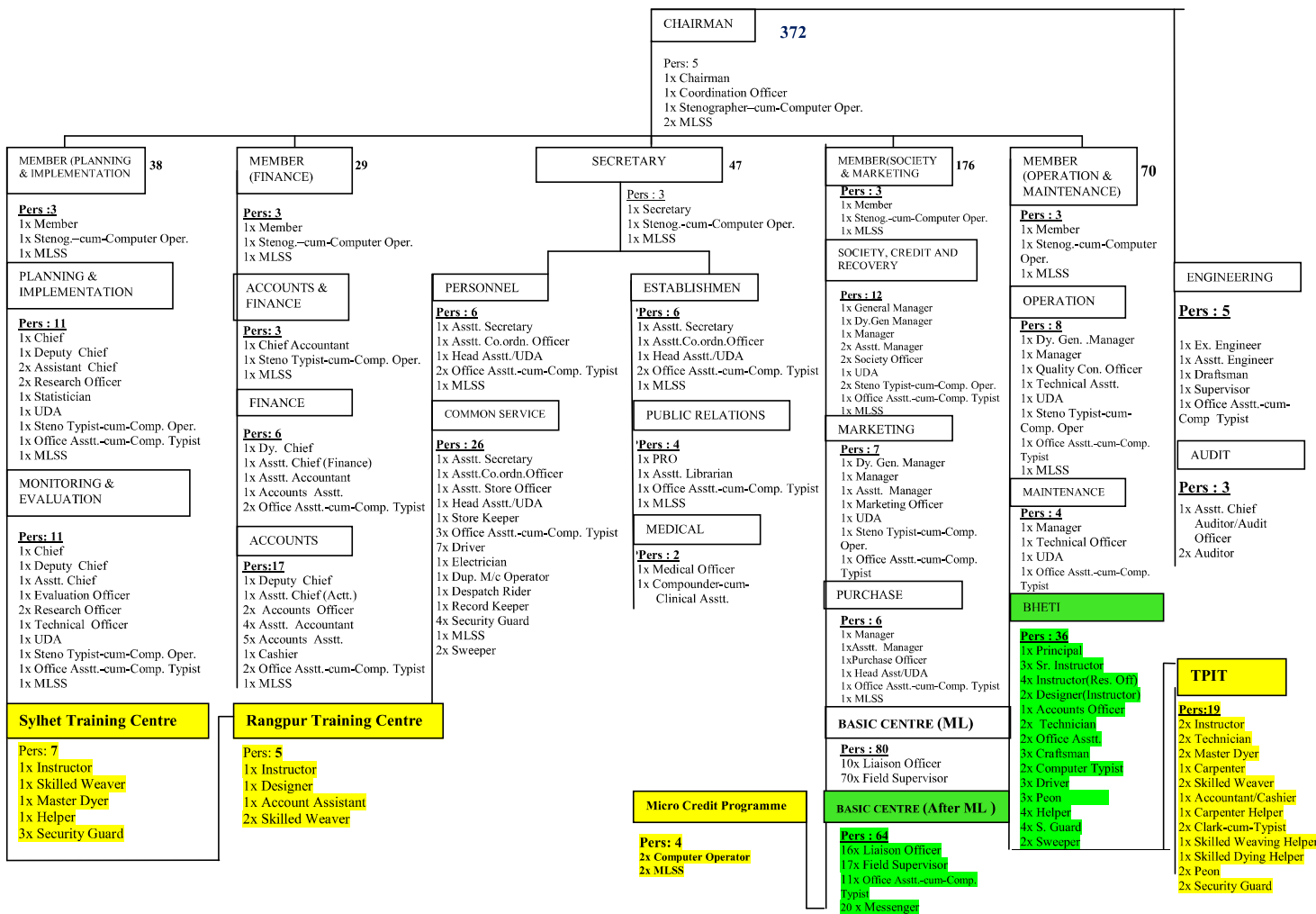


**ORGANISATIONAL CHART**  
**BANGLADESH HANDLOOM BOARD**  
 Ministry of Textiles & Jute



**SUMMARY OF MANPOWER**

SL NO	Name of Post	No. of sanctioned posts	No. of post transferred in the Revenue Budget after Enam Committee Report	Temporary Post	Total
1	Chairman	1	-	-	1
2	Member	4	-	-	4
3	Secretary	1	-	-	1
4	Chief Accountant	1	-	-	1
5	Chief (P&I)/(M&E)	2	-	-	2
6	General Manager	1	-	-	1
7	Deputy General Manager	3	-	-	3
8	Principal (CHPED)	-	1	-	1
9	Deputy Chief (P&I)/(M&E)	2	-	-	2
10	Deputy Chief Accountant	2	-	-	2
11	Manager	5	-	-	5
12	Asstt. Chief (P&I)/(M&E)	3	-	-	3
13	Asstt. Chief (Fin)/Asstt. Chief Acctt./Asstt. Chief Auditor/Audit Officer	3	-	-	3
14	Asstt. Manager	4	-	-	4
15	Sr. Instructor (CHPED)	-	3	-	3
16	Executive Engineer	1	-	-	1
17	Medical Officer	1	-	-	1
18	Research Officer/Statistician/Evaluation Officer/Asstt. Secretary/PRO/Marketing Officer	11	-	-	11
19	Instructor(RO)	-	4	4	8
20	Designer(Instructor)	-	2	1	3
21	Technical Officer	2	-	-	2
22	Quality Control Officer	1	-	-	1
23	Asstt. Engineer	1	-	-	1
24	Accounts Officer	2	1	-	3
25	Purchase Officer	1	-	-	1
26	Co-operative Officer	2	-	-	2
27	Co-ordination Officer	1	-	-	1
28	Liaison Officer	10	16	-	26
	Class-I	65	27	5	97
	Class-II	9	-	-	9
	Class-III	139	42	14	195
	Class-IV	24	31	16	71
	<b>Grand Total</b>	<b>237</b>	<b>100</b>	<b>35</b>	<b>372</b>

**AUTHORIZATION OF TRANSPORT, MAJOR OFFICE EQUIPMENT AND MISCELLANEOUS POINTS :**

Existing	Proposal	Total
1. TRANSPORT a. 1x Jeep b. 5x Car c. 1x Microbus d. 1x Motor Cycle for Dispatch Rider	a. 5x Jeep- 1 Chairman, 4 Members, 1 Secretary b. 8x Car- 5 for 3rd Grade Officers, 3 for 4th Grade Officers c. 5x Microbus for Officers & Staffs d. 31x Motor Cycle for 1 Dispatch Rider & 30 Basic Centre e. 1x Double Cabin pickup for Engineering Section	a. 6x Jeep b. 13x Car c. 6x Microbus d. 32x Motor Cycle e. 1x Double Cabin pickup
2. Private use of transport will be as per Govt. instructions issued from time to time	Private use of transport will be as per Govt. instructions issued from time to time	Private use of transport will be as per Govt. instructions issued from time to time
3. Air Conditioner: 2x Air Conditions for use in the office chamber of Chairman and conference room.	11 Air Conditions need for 1 Chairman, 4 Members, 1 secretary, 5 for 3rd grade officers and 2 Conference Room.	13 Air Conditions
4. OFFICE EQUIPMENTS a. 1 x Plain Paper copier b. 1 x Duplicating Machine c. 16 x Computers d. 7 x Word Processor e. 1 x Fax f. Intercom System 24 Lines	OFFICE EQUIPMENTS a. 6x Plain Paper copier b. -- c. 100x Computers d. 7x Word Processor e. 6x Fax f. Intercom System 24 Lines g. 1x Sound System Board Room h. 1x Projector i. 6x Scanner	OFFICE EQUIPMENTS a. 7x Plain Paper copier b. 1x Duplicating Machine c. 116x Computers d. 14x Word Processor e. 7x Fax f. Intercom System 48 Lines g. 1x Sound System Board Room h. 1x Projector i. 6x Scanner

- এম.এল. কমিটির অনুমোদিত পদ।
- এম.এল. কমিটির পর সৃজিত স্থায়ী পদ।
- এম.এল. কমিটির পর সৃজিত অস্থায়ী পদ।

মোঃ মোজিবুল আলী  
 সদস্য (যুগ্ম সচিব)  
 বাংলাদেশ তাঁত বোর্ড  
 বঙ্গ ও পাট মন্ত্রণালয়

মোঃ রফিকুল ইসলাম  
 চেয়ারম্যান (অতিরিক্ত সচিব)  
 বাংলাদেশ তাঁত বোর্ড  
 বঙ্গ ও পাট মন্ত্রণালয়

ডাঃ মোঃ সাজেদুল হাসান  
 অতিরিক্ত সচিব  
 বঙ্গ ও পাট মন্ত্রণালয়  
 গণপ্রজাতন্ত্রী বাংলাদেশ সরকার

28/8/24  
 মোঃ মাহবুবুর রহমান চৌধুরী  
 বঙ্গ ও পাট মন্ত্রণালয়  
 গণপ্রজাতন্ত্রী বাংলাদেশ সরকার